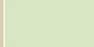






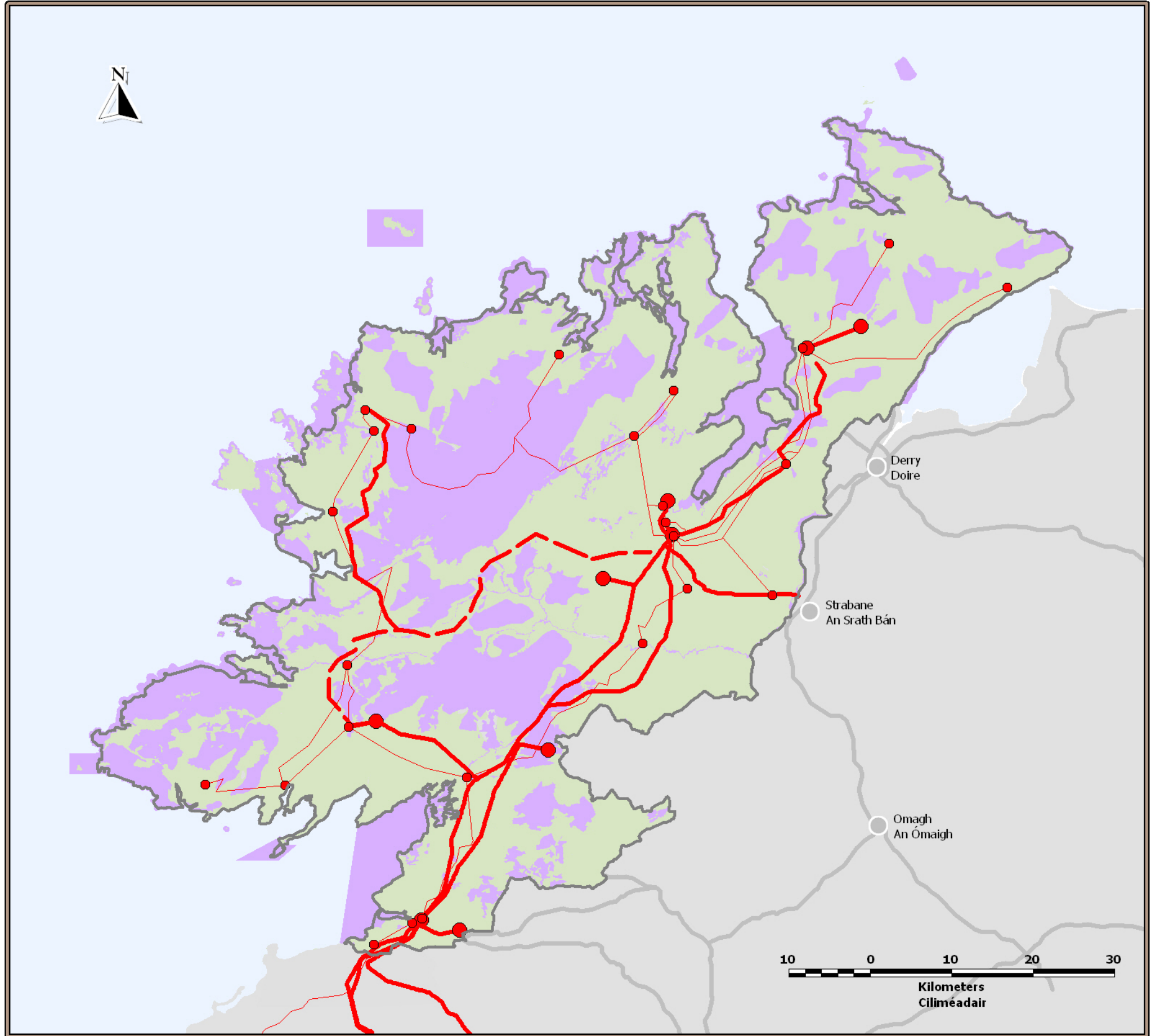
 **County Donegal
Development Plan
2012 - 2018**

**Plean Forbartha
Contae Dhún na nGall
2012 - 2018**

Map 9 / Léarscáil 9

**Wind Energy
Fuinneamh Gaoithe**

-  Areas Open to Consideration
Limistéir a d'fhéadfaí a phlé
-  Not Favoured Areas
Ceantair nach bhfuiltear
i bhfách leo
-  38 Kv station
Stáisiún 38Kv
-  38 Kv Line
Líne 38 Kv
-  110 Kv Station
Stáisiún 110 Kv
-  110 Kv Line
Líne 110Kv
-  110 Kv Reinforcement Line
- Operational from 2012
Líne Átreisiúcháin 110 Kv
- i bhfeidhm ó 2012



Source - Donegal County Council
Foinse - Comhairle Chontae Dhún na nGall

Ordnance Survey Ireland data reproduced under OSI Licence Number 2012/02/CCMA/Donegal County Council. Unauthorised reproduction infringes Ordnance Survey Ireland and Government of Ireland copyright. Ordnance Survey Ireland, 2012. Donegal County Council, 2012.
Sonraí de chuid Shuirbhíreachtaí Ordnáis Éireann ama atáirgeadh faoi Umhír Cheadúnais SOÉ 2012/02/CCMA Comhairle Contae Dhún na nGall. Má dhéantar é seo a atáirgeadh gan údarás, sáróidh sé cóipcheart Shuirbhíreachtaí Ordnáis Éireann agus Rialtas na hÉireann. Shuirbhíreachtaí Ordnáis Éireann, 2012. Comhairle Contae Dhún na nGall, 2012.

To be read in conjunction with relevant accompanying text contained in the front section of this appendix as well as other relevant objectives & policies of the CDP.
Le léamh i gcomhar leis an téacs ábhartha tionlacain atá chun tosaigh sa chuid seo den aguisín chomh maith le cuspóirí agus beartaí ábhartha eile sa PPC.